

# MS832 USB virtual COM Driver Configuration Guide

## Prepare:

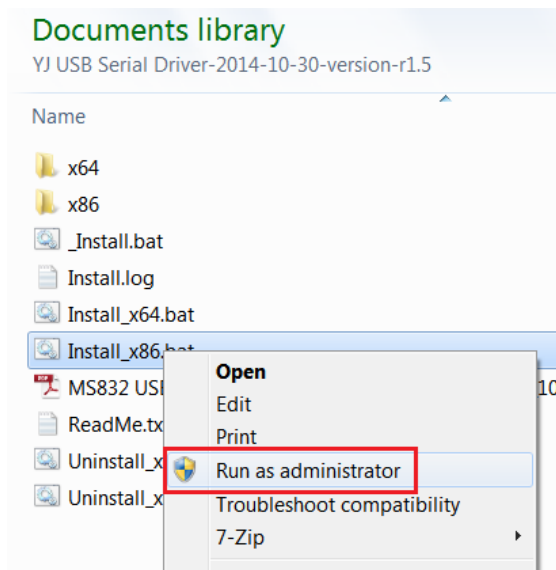
1. MS832 x 1 set.
2. YJ USB Serial Driver-2014-10-30-version-r1.5

## Installation Steps:

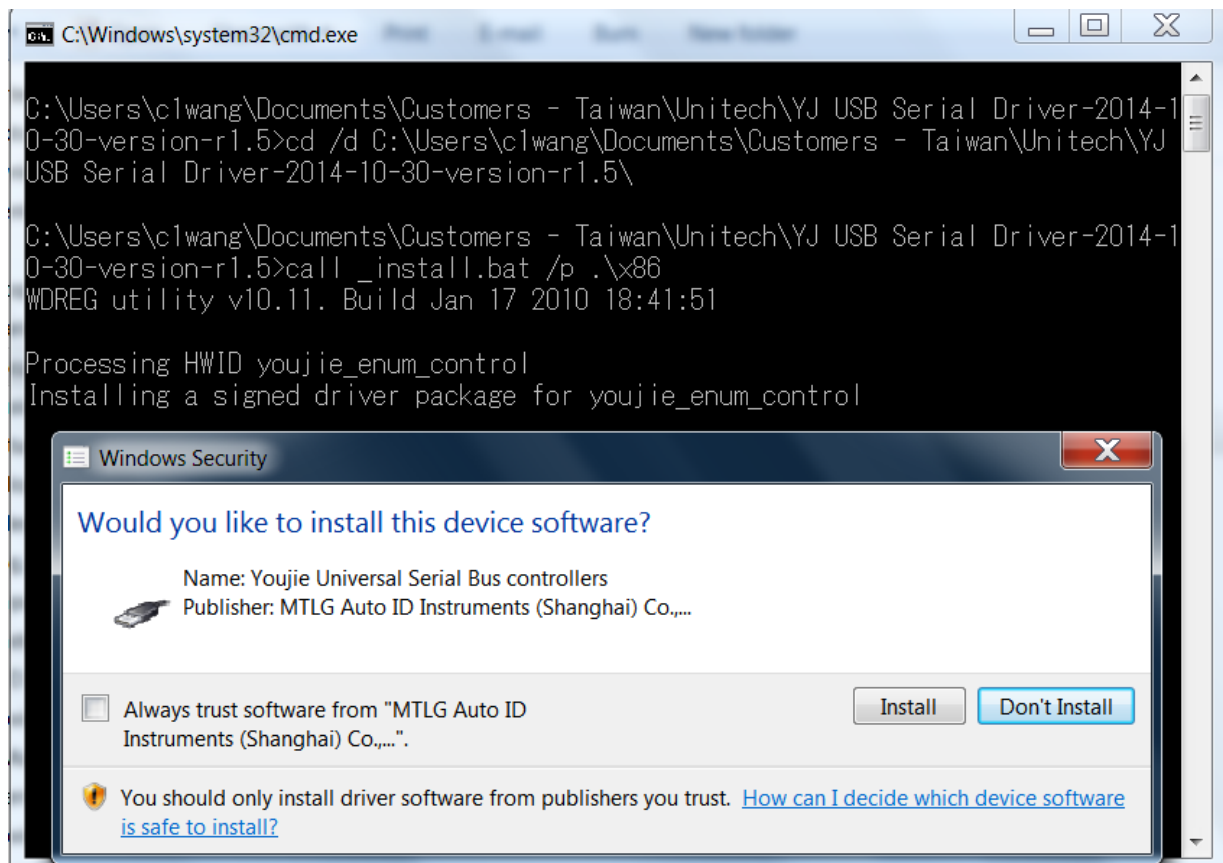
1. Copy the driver folder “YJ USB Serial Driver-2014-10-30-version-r1.5” to local disk.
2. Click on “Install\_x64.bat” (64-bit) or “Install\_x86.bat”(32-bit) accordingly to install the driver by your OS system.
3. Right click “Install\_x64.bat” or “Install\_x86.bat” and [Run as administrator]

For example, below install Virtual Com driver to Win7 32-bit OS, some screen shots for reference.

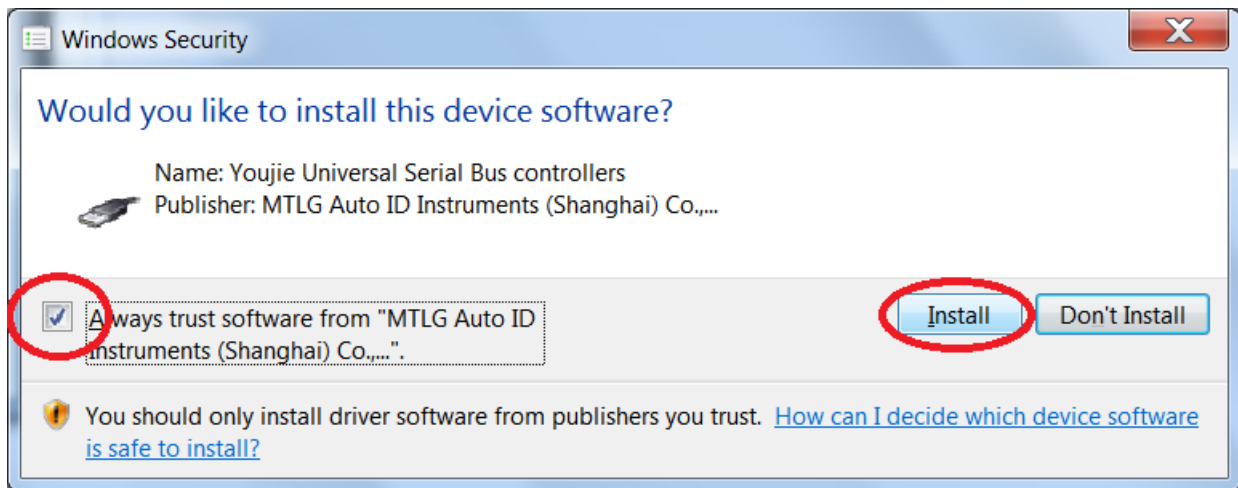
### 3-1 Right click Install\_X86.bat and [Run as administrator]



### 3-2 Wait to see Windows security warning window.



- 3-3 Check [Always trust software from "MTLG Auto ID Instruments (Shanghai) Co.,...."]  
Click [Install]



- 3-4 Wait for USB driver to finish install (around 2~3 min depending on computer speed)

```
C:\windows\System32\cmd.exe

LOG ok: 0, Install completed
LOG ok: 1, RETURN: DriverPackageInstallW (0x0)
LOG ok: 1, RETURN: DriverPackageInstallA (0x0)
difx_install_preinstall_inf: err 0, last event 0, last error 0. SUCCESS
install: completed successfully
WDREG utility v10.11. Build Jan 17 2010 20:08:36

Processing HWID USB\VID_23D0&PID_0B94
Installing a signed driver package for USB\VID_23D0&PID_0B94
LOG ok: 1, ENTER: DriverPackagePreinstallA
LOG ok: 1, ENTER: DriverPackagePreinstallW
LOG ok: 0, C:\Users\HT138049\Desktop\sale provide\Eric\G500_virtual COM\YJ USB S
erial Driver-2012-11-12-version-r1.3\x64\youjie_enum.inf is preinstalled.
LOG ok: 1, RETURN: DriverPackagePreinstallW (0x0)
LOG ok: 1, RETURN: DriverPackagePreinstallA (0x0)
difx_install_preinstall_inf: err 0, last event 0, last error 0. SUCCESS

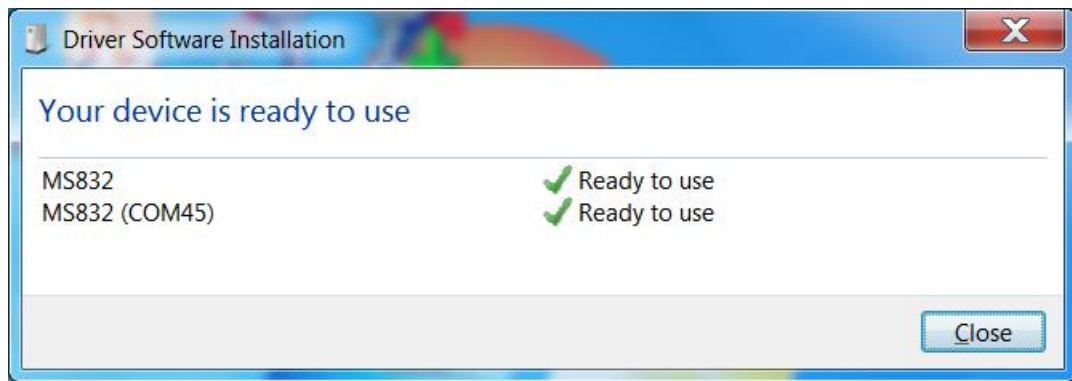
Processing HWID USB\VID_23D0&PID_0B8A&MI_00
Installing a signed driver package for USB\VID_23D0&PID_0B8A&MI_00
preinstall: completed successfully
WDREG utility v10.11. Build Jan 17 2010 20:08:36
```

4. Connect MS832 to PC with USB cable then scan below barcode.

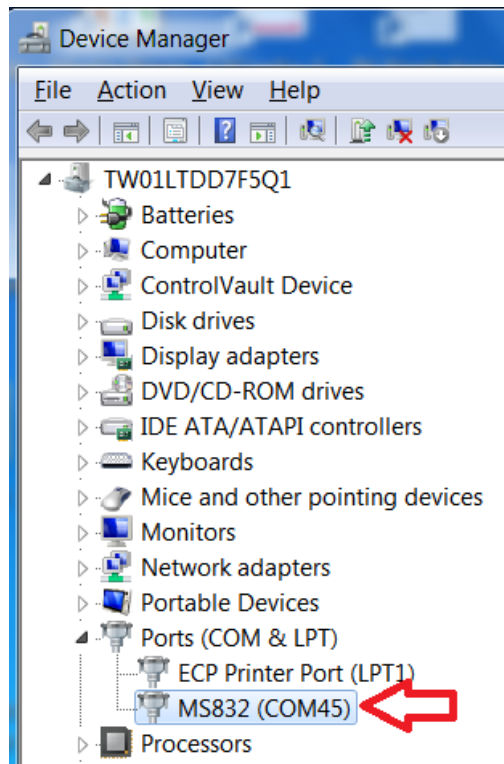


TERMID130.

5. Unplug/plug-in MS832 to computer USB port to load USB virtual com drivers.



6. Verify COM port in Device manager.



7. Installation DONE and ready to use.

---END---